

# CLIFF

## 1/4" S1VS vertical PCB mounting Jack Sockets



S1VS/SBB Metal Thread Nose



S1VS/SBB Metal Thread Nose

The **CLIFF**<sup>®</sup> range of S1VS Jack Sockets incorporate significant new design features. The compact design offers the highest board packing density available. The design supports auto insertion and snap-in PCB mounting to facilitate assembly and wave soldering. The S1VS is available with six circuit options.

### Significant features include:

- Compact vertical PCB mounting with 24mm stand-off gives high packing density.
- Snap-in PCB mounting to facilitate pre-assembly and wave soldering.
- Metal nose for grounding chassis to plug and PCB.
- Body design supports auto-insertion.
- Compatible with most similar types.

#### Cliff Electronic Components, Ltd.

76 Holmethorpe Avenue, Holmethorpe Ind. Est.

Redhill, Surrey RH1 2PF. England

Tel: +44 (0) 1737 771375

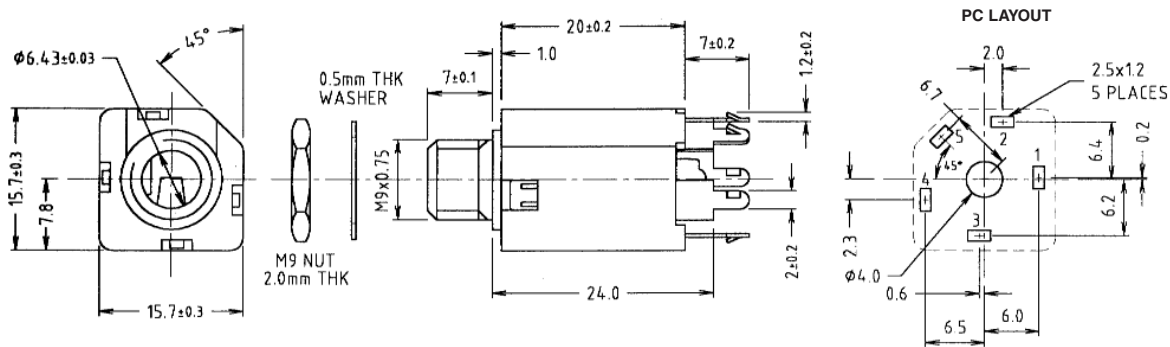
Fax: +44 (0) 1737 766012

Email: [sales@cliffuk.co.uk](mailto:sales@cliffuk.co.uk)



Visit us online at:

[www.cliffuk.co.uk](http://www.cliffuk.co.uk)



MODEL	S1V/S/SBB	S1V/S/SSB	S1V/S/SBS	S1V/S/SSS	S1V/S/SNB	S1V/S/SNS	
P/No.	FM 6700	FM 6701	FM 6702	FM 6703	FM 6704	FM 6705	
SCHEMATIC							

**Technical Data:**

- Withstand voltage:** 2000V DC Min.
- Maximum Current:** 5 amp.
- Temperature Rating:** -10° C to + 70° C
- Life (Minimum):** 10,000+ Operations.
- Nominal Contact Resistance:** <50mΩ

### Specifications:

Designed to receive both mono and stereo 1/4" jack plugs, the S1VS socket is moulded in durable grade 1 black nylon with **CLIFF**® Ni-Ag® Alloy self-cleaning contacts for superior performance and reliability. The S1VS can be supplied with a nickel plated brass hexagonal nut (standard) or slotted ring nut. Mounting hardware, if required, is supplied unassembled. Six different switching circuit options are available.